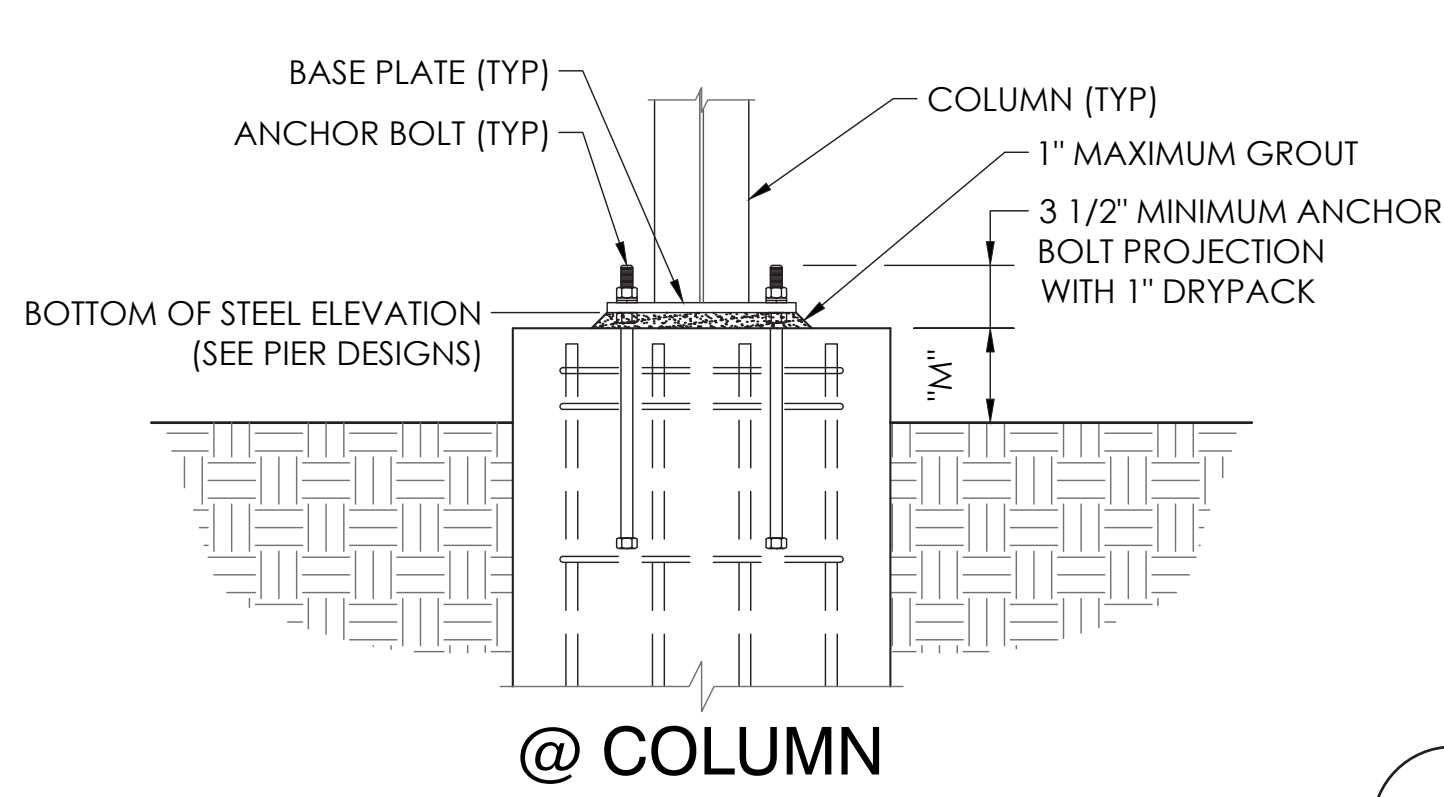
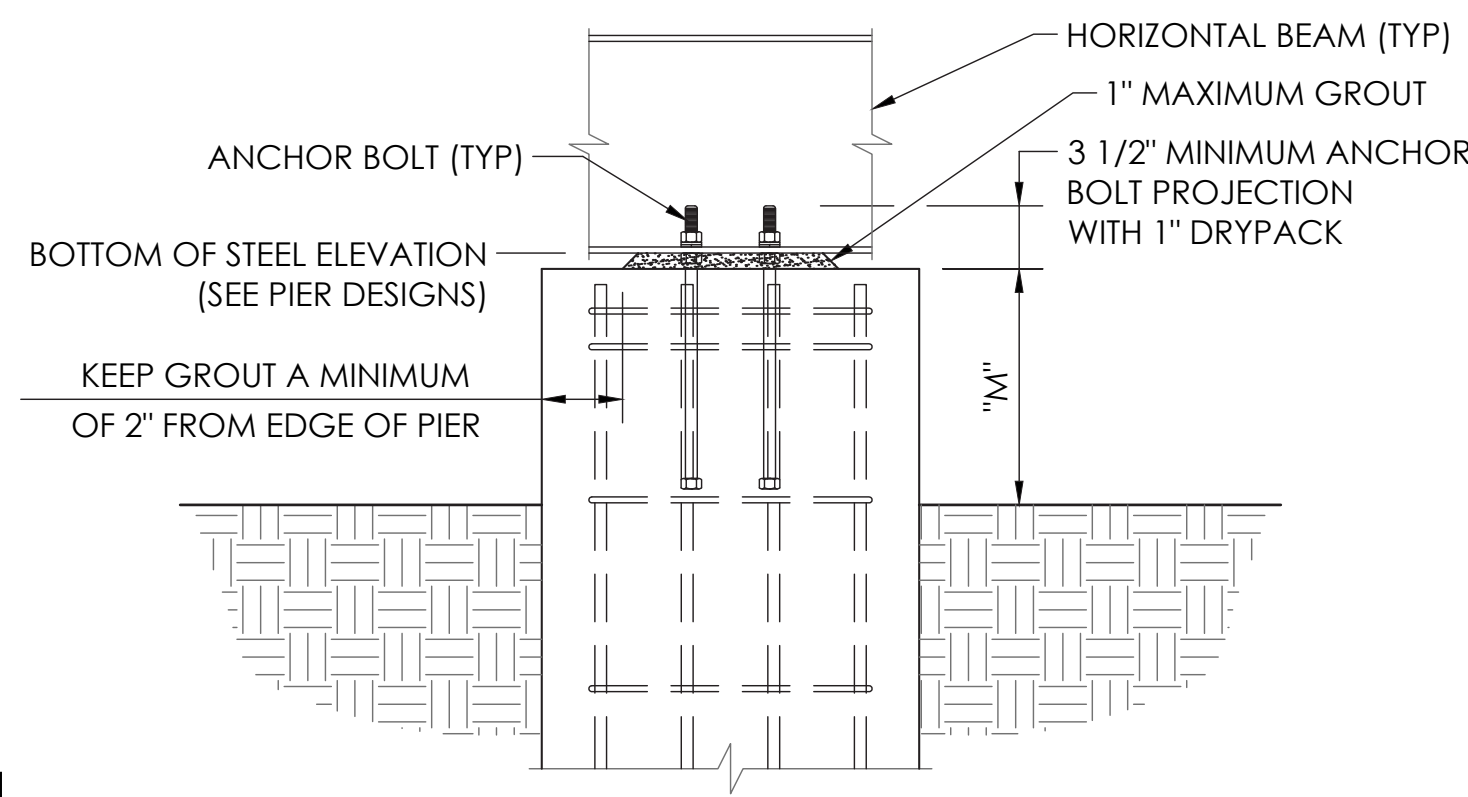


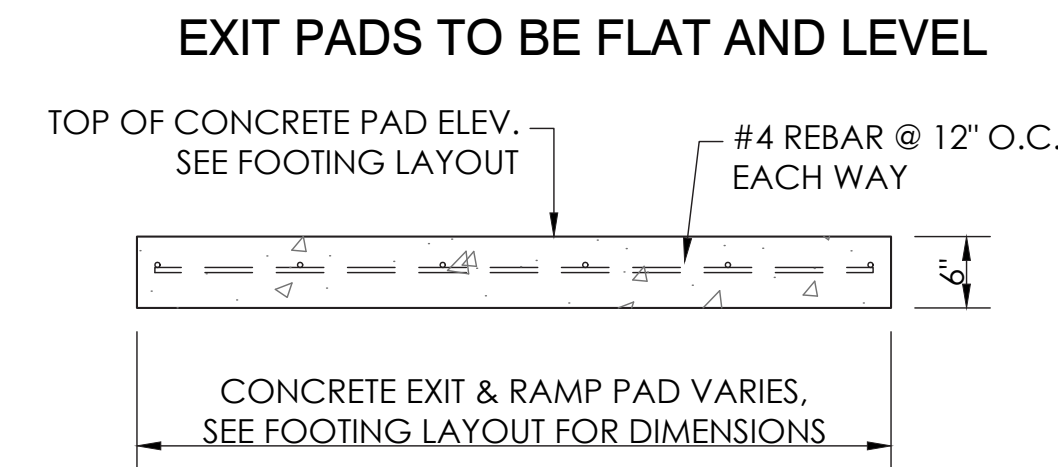
THIS DRAWING AND ALL INFORMATION THEREIN IS THE PROPERTY OF THE SOUTHERN BLEACHER COMPANY, TAYLOR & SYFAN AND IS CONFIDENTIAL AND MUST NOT BE MADE PUBLIC OR COPIED. THIS DRAWING IS LOANED SUBJECT TO RETURN UPON DEMAND AND IS NOT TO BE USED DIRECTLY OR INDIRECTLY IN ANY WAY DETRIMENTAL TO OUR INTERESTS.



1 TOP OF PIER DETAIL
B35 NOT TO SCALE



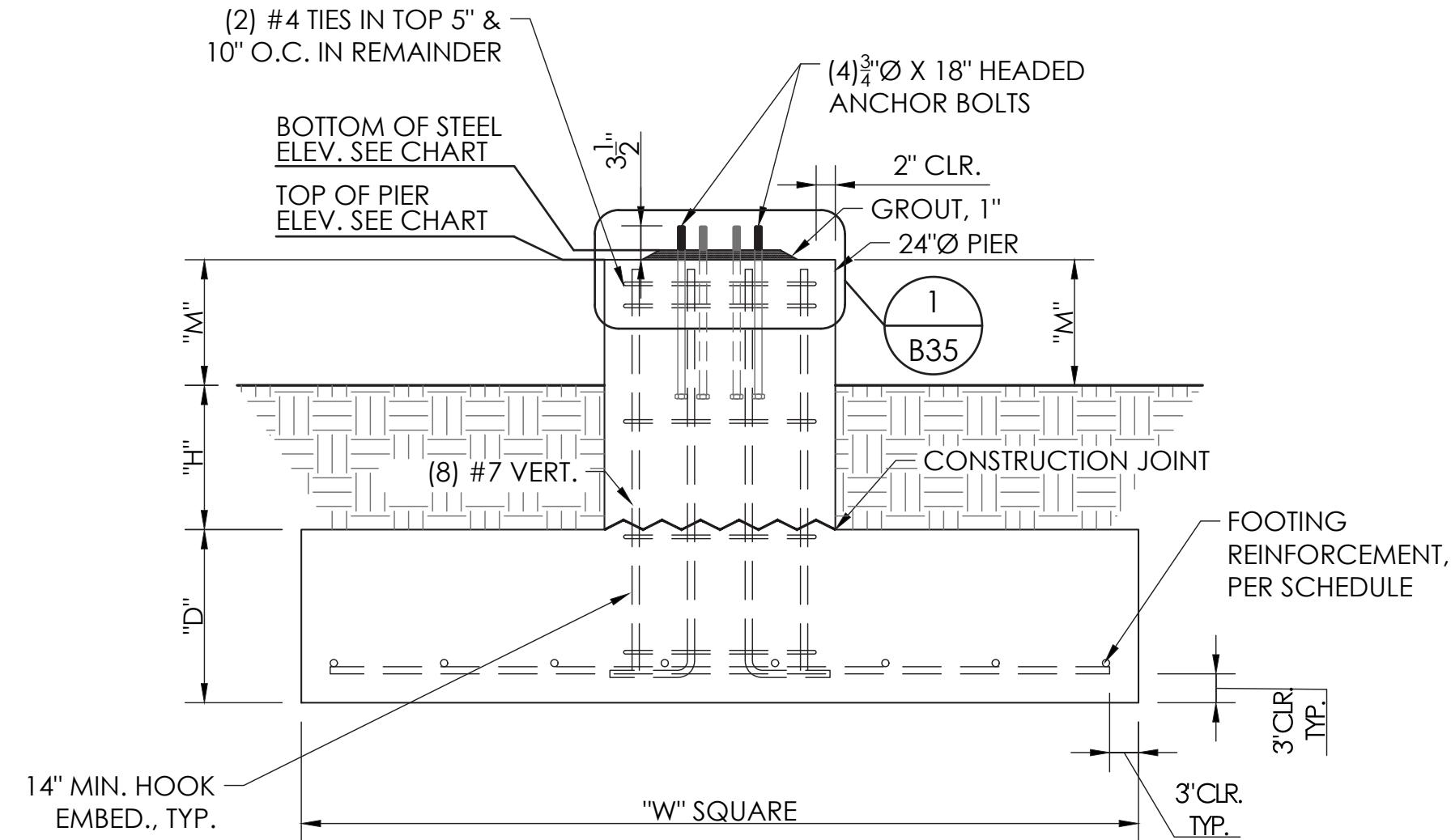
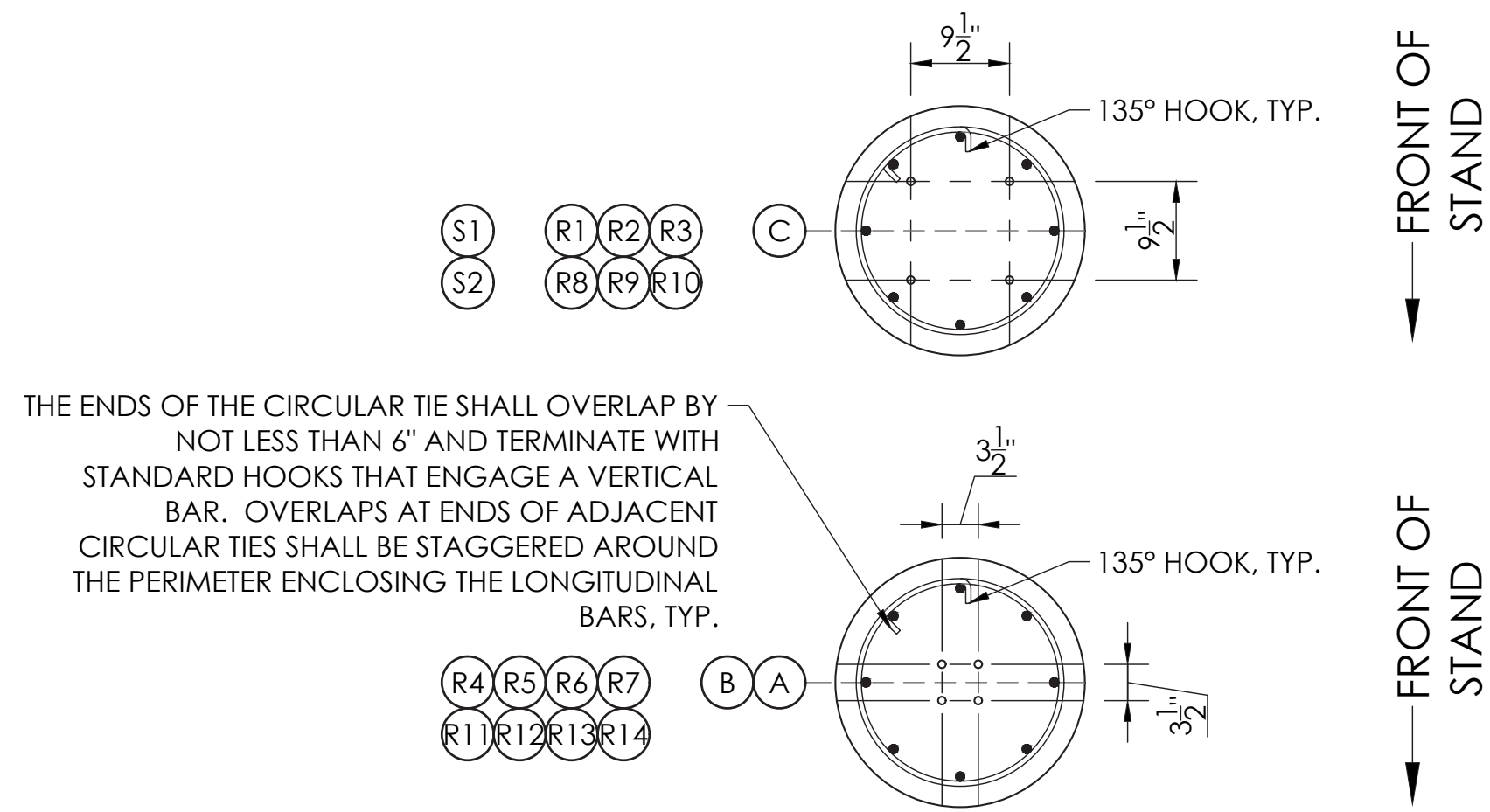
@ HORIZONTAL BEAM



2 MINIMUM EXIT PAD DETAIL
B35 NOT TO SCALE

FOOTING SCHEDULE
T.O.P. = TOP OF PIER
B.O.S. = BOTTOM OF STEEL

FOOTING # (R = RAMP PIER)	T.O.P. ELEV.	B.O.S. ELEV.	GROUT	"H"	"D"	"M"	"W"	FOOTING REINFORCEMENT
A ROW	220.987'	221.082'	1 1/8"	15"	18"	36" MAX.	6'-3" X 6'-3"	(6) #6 EACH WAY
A10, A11	220.987'	221.070'	1"	15"	18"	36" MAX.	6'-3" X 6'-3"	(6) #6 EACH WAY
B ROW	223.524'	223.629'	1 1/4"	15"	18"	60" MAX.	6'-9" X 6'-9"	(6) #6 EACH WAY
B10, B11	223.524'	223.629'	1"	15"	18"	60" MAX.	6'-9" X 6'-9"	(6) #6 EACH WAY
C1, C3, C4, C6, C7	220.317'	220.400'	1"	15"	18"	12" MAX.	5'-9" X 5'-9"	(6) #6 EACH WAY
C9 - C12, C14, C15, C17	220.317'	220.400'	1"	15"	18"	12" MAX.	5'-9" X 5'-9"	(6) #6 EACH WAY
C2, C5, C8, C13, C16	220.317'	220.400'	1"	15"	18"	12" MAX.	5'-0" X 5'-0"	(5) #6 EACH WAY
R1 - R4, R11 - R14	220.317'	220.400'	1"	15"	18"	12" MAX.	4'-9" X 4'-9"	(4) #6 EACH WAY
R5, R15	222.971'	223.054'	1"	15"	18"	38" MAX.	3'-9" X 3'-9"	(4) #6 EACH WAY
R6, R7, R16, R17	222.355'	222.439'	1"	15"	18"	36" MAX.	3'-9" X 3'-9"	(4) #6 EACH WAY
R8, R18	221.737'	221.821'	1"	15"	18"	36" MAX.	3'-9" X 3'-9"	(4) #6 EACH WAY
R9, R10, R19, R20	221.022'	221.105'	1"	15"	18"	36" MAX.	3'-9" X 3'-9"	(4) #6 EACH WAY
S1, S2	220.321'	220.404'	1"	15"	18"	12" MAX.	3'-9" X 3'-9"	(4) #6 EACH WAY



3 FOOTING & PIER DETAIL
B35 NOT TO SCALE

STRUCTURAL ENGINEERS
TAYLOR & SYFAN
5955 CHILMARK AVENUE
SAN JOSE, CA 95121
Tel: (408) 724-2488
Fax: (408) 294-3881
www.taylorandsyfan.com

PO Box One, Graham, Texas 76440
801 Fifth Street
Phone: 940/549-0733 Fax: 940/549-1365
Established 1946

REGISTERED PROFESSIONAL ENGINEER
BRIAN T. DEAR
No. 022214
Exp. 06/30/21
STRUCTURAL
STATE OF CALIFORNIA
S&S
12/03/20
PRINCIPAL

NORWALK - LA MIRADA UNIFIED SCHOOL DISTRICT
LA MIRADA HIGH SCHOOL
LA MIRADA, CALIFORNIA

NO.	REV.	DATE	DESCRIPTION
1	ES	02/26/20	ES EMDM

19333

B35

B55

22" X 34" (11x17 = 1/2 indicated scale)

IDENTIFICATION STAMP
DIV. OF THE STATE ARCHITECT
APP: 03-120551 INC:
REVIEWED FOR
SS ☒ FLS ☒ ACS ☒
DATE: 01/11/2021

REVISIONS

1 DSA_V2 Date 1



NORWALK LA MIRADA UNIFIED SCHOOL DISTRICT
LA MIRADA HIGH SCHOOL NEW FOOTBALL
STADIUM PROJECT
13520 ADELA DRIVE, LA MIRADA, CA 90638

DSA # 03-120551

NAC
ARCHITECTURE

NAC NO. 161-19015
DATE 12/10/2020

PIER DETAILS
VISITOR

B35